
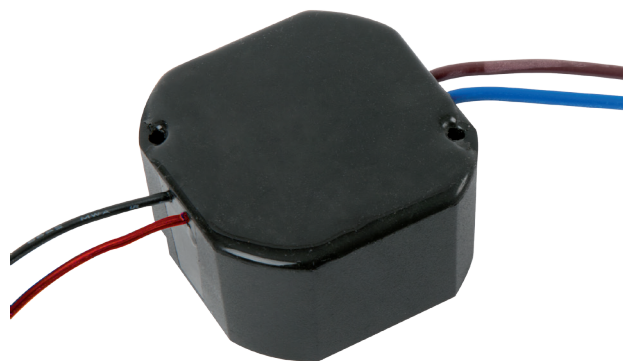


ROUND POWER SUPPLY






12V DC - 1,5 A

- Space saving product
- PTC protection against overcurrents and short circuits
- For surface or flush mounting (in mounting box - diam. 60 mm or junction box)
- Insulation protection class II 



ADE12015

CHARACTERISTICS

Dimensions H x W x D		48 x 49,50 x 26 mm	
	100 - 240V AC		12V DC
	1,5 A		18 W
	0 +45° C		

ADE12015

Round power supply 12V DC - 1,5 A suit. for recessed pot

0,12kg

Customs code
85044090

